



DIVERSIFIED STORAGE SYSTEMS

(888) SILO-SYS (888) 745-6797

SuperSack Trans Pod Operating Manual



Silo Specifications

Silo Weight (empty)	5,700 Lbs.
Silo Size	150 Cubic Feet
Silo Capacity	15,000 Lbs. (7 1/2 tons)
Dimensions	9'H X 7'-6"W X 12' L
Rate of Discharge	1200lbs a min.
Discharge Type	Pneumatic 4" line
Discharge	12" Vane Feeder
Power	480v/3ph/60hz
Control Power	NEMA 2 480v
Dust Collector	WAM 300 Pulse Jet

Silo Description

SupersaX Trans Pos silo system is a portable self-contained silo designed to transfer dry bulk products to be used on job sites or in plant applications. The design has many features that make the *SupersaX* Trans Pod silo system a must have in applications when transferring from supers sacks to bulk storage. The silo can store up to 15,000 Lbs. of bulk product to be pneumatically transferred out using our 12" vane feeder with transition tube. The silo is equipped with a fan drawn dust collector for dust free operation. Fork pockets allow for ease of transport. Filling the silo is done by using a forklift to lift the product over hopper and lowered onto the knife plate inside. The silo has a ladder to allow operator safe access to the top of the silo



1135 E. Wooley Rd. Ph # 805-247-0418
Oxnard CA, 93030 Fax # 805-247-0246

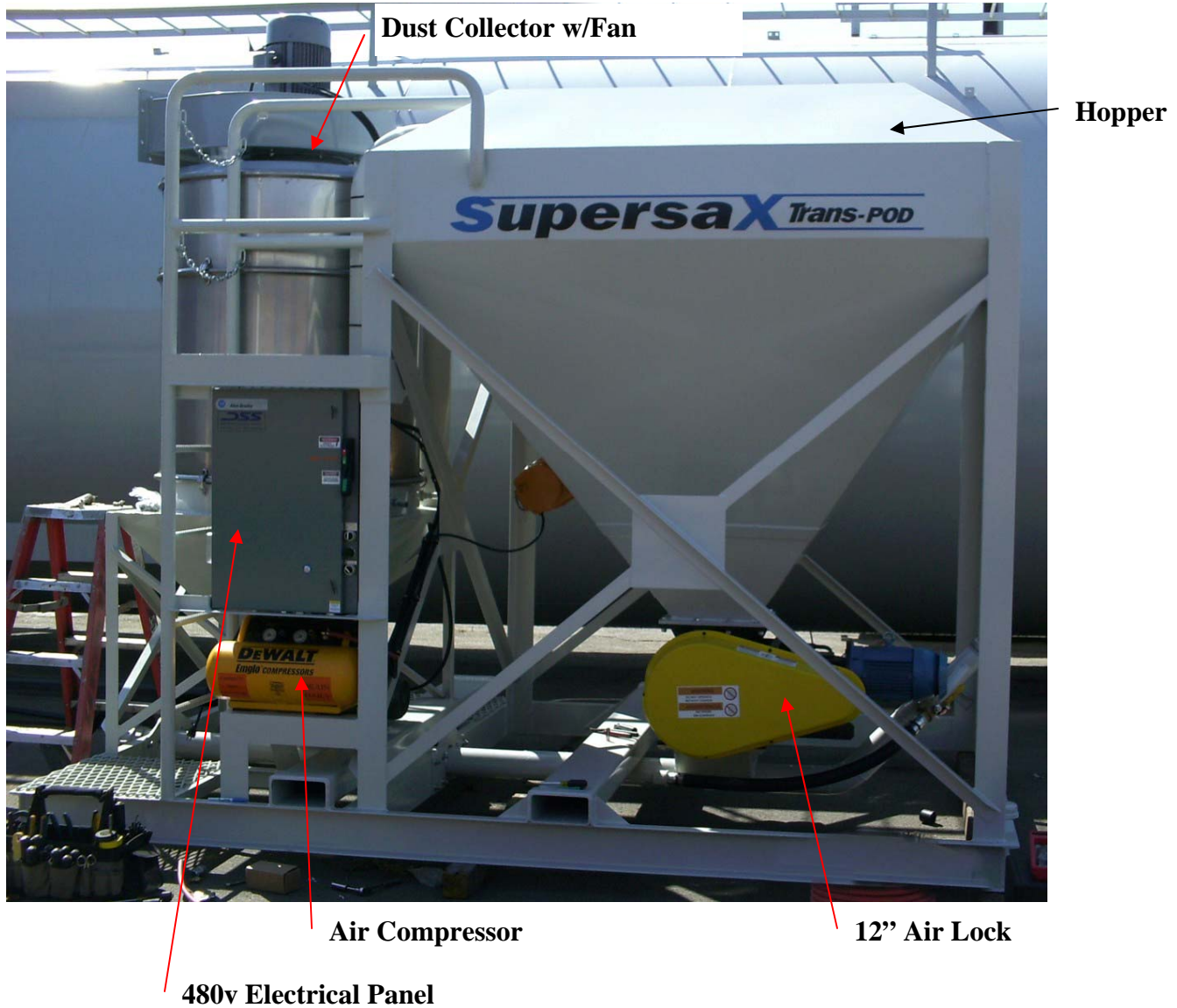
www.CementSilos.com



DIVERSIFIED STORAGE SYSTEMS
(888) SILO-SYS (888) 745-6797

SuperSack Trans Pod Operating Manual

Layout



1135 E. Wooley Rd.
Oxnard CA, 93030

Ph # 805-247-0418
Fax # 805-247-0246

www.CementSilos.com

Assembly

This unit will be delivered in 2 separate pieces. The hopper section (A) and then the dust collector section (B).

1. Once unpacked stand both units up. Set on level ground then slide the two together.
2. Begin by bolting the two pieces together with the supplied bolts. (frame bolts, brace bolts then transfer line bolts,
3. Hook the vent line to the dust collector.
4. Attach the vent line from the vane feeder.
5. Run all the electrical wires to the electrical panel.
6. Energize the electrical panel 480v/ 3ph
7. Check rotation on the vane feeders.
8. Remove the hopper lid. Remove the knife plate blade protector.

Section A



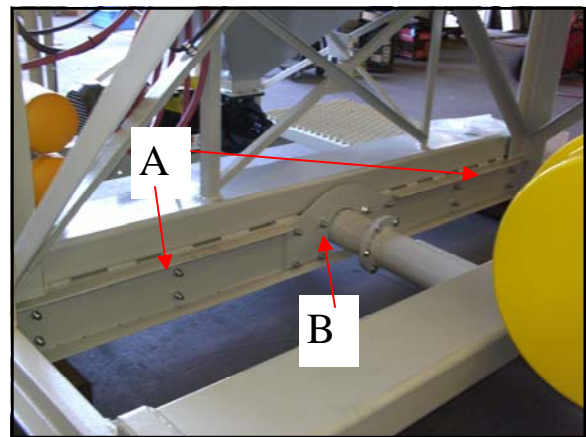
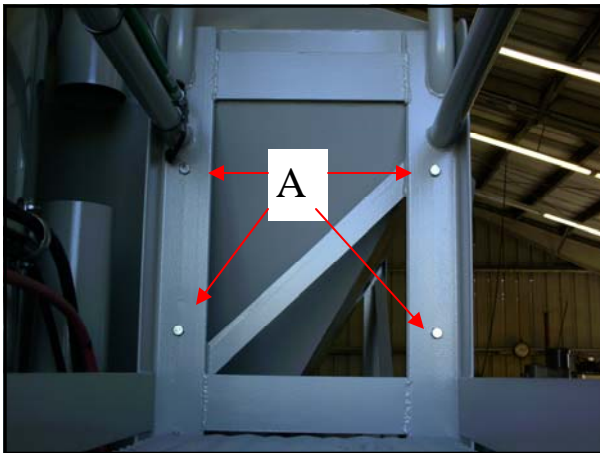
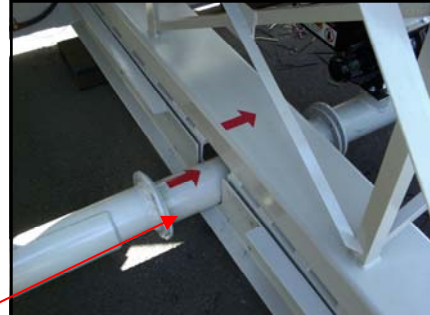
Section B



Assembly

First: Set the small transition tube piece in place (the one with the arrow)
Next slide the two pieces together and line up the frame. The dust collector piece will slide over top.

Second: Line up all the bolt holes and insert the supplied bolts.
Put the frame bolts in first (*do not tighten*) A
Then put the braces on and insert the bolts. (*do not tighten*). B the braces are labeled 1 and 2 match up the numbers and arrows.
Once all the bolts are in then go back and tighten.





DIVERSIFIED STORAGE SYSTEMS
(888) SILO-SYS (888) 745-6797

SuperSack Trans Pod Operating Manual

Assembly

Third: Connect the dust collector vent lines with the supplied blue 5" hose and clamp down.

Forth: connect the 2' vent lines from the 12" vane feeder to the dust collector.



1135 E. Wooley Rd. Ph # 805-247-0418
Oxnard CA, 93030 Fax # 805-247-0246

www.CementSilos.com

Assembly

Five: Connect the electrical wires to the electrical panel, all the wires are labeled.

Six: Panel can now be energized with 480v/ 3ph power.
Connect to main circuit breaker in panel.



Seven Confirm all the equipment is running in the right direction. Fan, 12" vane feeder, 4" vane feeder and vibrator. They all have direction arrows.

Assembly

Eight: Remove the hopper lid, (hopper should always be cover when not in use).

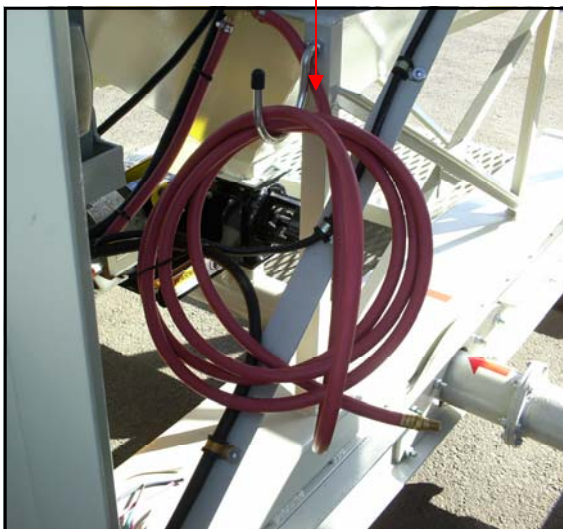
Remove the knife plate blade cover.

System is ready to use.



Other features: We supplied a grapple extension to pick out material chunks that will not fit through the grading. (it is zip tied to railing)

We supplied an extra air compressor line to hook up a air tool or to blow off dust.





DIVERSIFIED STORAGE SYSTEMS
(888) SILO-SYS (888) 745-6797

SuperSack Trans Pod Operating Manual

Operating Continued



Operating Instructions:

First the electrical panel needs to be energized, 480v/3ph/60hz 50amp. (must confirm rotation of air locks)

This system also requires a hi volume lo pressure air source minimum requirement 460cfm at 10psi. (*not Supplied*)

The Super Sack Trans Pod has three main components. The 12" vane feeder, 4" vane feeder and the dust collector with fan.

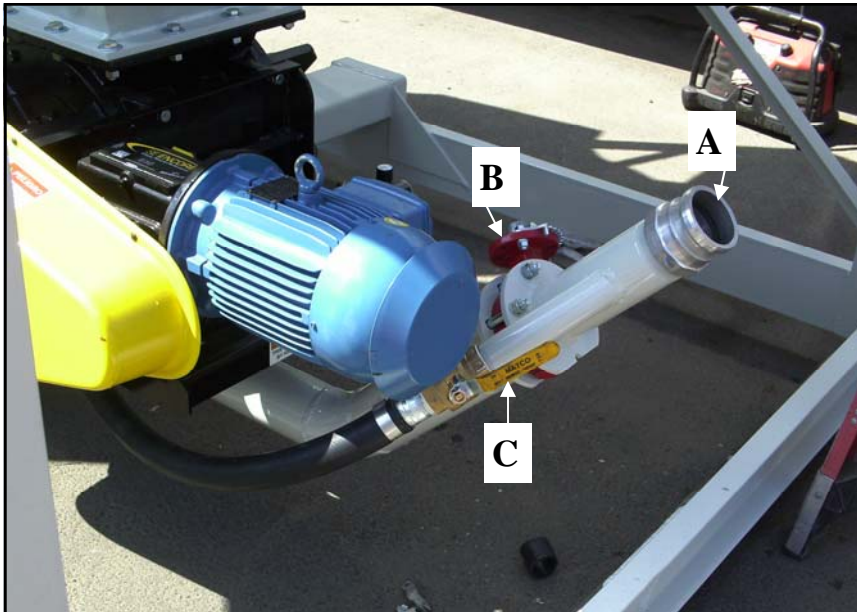
1. Turn start switch to **ON** (this will turn on all three components). The green light will illuminate showing the system is running.
2. The blower needs to running at this point.
3. The system is ready to start loading bags into it.
4. With a fork lift or similar, lower the super sacks into the hopper, the knife plate will cut the bags, then raise bag hold over hopper and verify it is empty.



DIVERSIFIED STORAGE SYSTEMS
(888) SILO-SYS (888) 745-6797

SuperSack Trans Pod Operating Manual

Operating Continued



- A. 3" male camlock: Blower input.
- B. 3" Butterfly valve: air flow control valve.
- C. 1 1/2" Ball Valve: Chase air control valve.

1. Attached 3" hot hose from blower to 3" male camlock.
2. Adjust 3" Butterfly valve to achieve right balance of air to product. Too much air will slow down the delivery time and too little air will plug the line.
3. Use the 1 1/2" ball valve (chase air) to help move the product through the transfer line.

Daily operating tips:

Once the last bag has been emptied leave the system running for 5 minutes to clear out the lines and empty dust collector.

Always cover the hopper when not in use to keep rain and other unwanted materials out of the hopper.



DIVERSIFIED STORAGE SYSTEMS
(888) SILO-SYS (888) 745-6797

SuperSack Trans Pod Operating Manual

Dust Collector Maintenance



The WAM 400 Pulse jet dust collector runs all the time during operation. The pulse jet timing is preset and will need no adjusting in the field.

Maintenance:

Weekly: Open up the grain valve on the air tank to release any excess water.

Monthly : Open inspection door to do a visual inspection of the filters. Make sure there is no excessive build up of material on the filters.

Changing of filters: The filters inside this unit should last 24 months of heavy use. If a filter is damaged or they are worn out they should be replaced.

To replace open access door, grasp filter and turn clockwise to remove.

To install place filter into slot and turn counter clockwise to tighten.



1135 E. Wooley Rd. Ph # 805-247-0418
Oxnard CA, 93030 Fax # 805-247-0246

www.CementSilos.com