



DIVERSIFIED STORAGE SYSTEMS  
(888) SILO-SYS (888) 745-6797

## BAZOOKA TUBE 1200



**BAZOOKA TUBE 1200** Portable transfer of super sacks to truck or rail car.  
Description: 30 x 8.5 x 14.5, weight 9880.

Some innovative features include: (as pictured)

- 12" Auger with a 20hp electric motor - 30cfm
- Open top hopper with knife blade and dust control
- WAM 400 pulse jet dust collector with fan
- Electronically controlled loading spout with dust collection
- Hydraulic operated height control
- Electric vibrator on hopper
- Air compressor

46 HC Pioneer Parkway  
Sulphur Springs, TX

Ph # 903-919-0600  
Fax # 903-919-0601

[www.CementSilos.com](http://www.CementSilos.com)



DIVERSIFIED STORAGE SYSTEMS

(888) SILO-SYS (888) 745-6797

## BAZOOKA TUBE 1200 Operating Manual

### Operating manual for Bazooka Tube 1200

1. Set-up
2. Operating instructions
3. Loading
4. Maintenance
5. Electrical
6. Parts

#### 1. Set-up

##### *Step One*

Move Bazooka Tube into desired location.  
Have a qualified electrician hook up to the electrical panel, confirm voltage and phase.  
Confirm screw rotation (rotation marked on on conveyor).

##### *Step Two (below)*

Remove trailer hitch pin and remove tongue (set it next to the unit)  
For storage, reinstall pin in hole at the end of the red tongue.



Transportation mode



Operating mode:  
Remove the Red Hitch

46 HC Pioneer Parkway  
Sulphur Springs, TX

Ph # 903-919-0600  
Fax # 903-919-0601

[www.CementSilos.com](http://www.CementSilos.com)



## BAZOOKA TUBE 1200 Operating Manual

### *Step Three:*

Remove the pin from hydraulic lift.  
Raise the Auger to operating height.  
Control located on control panel,  
Bottom switch (Lift Auger).

**\*\*takes approximately 4 minutes for  
full extension.**

Put pin back once lift is fully  
extended to operating height.



### *Step Four:*

Lower the two jack stands located by  
the wheels to stabilize unit.



## BAZOOKA TUBE 1200 Operating Manual



### *Step Five:*

Remove the cover from the hopper.

Make sure the valve under the hopper is closed during operation

The unit is ready for operation mode.

## BAZOOKA TUBE 1200 Operating Manual

### Operating instructions:

#### *Step One:*

Lower loading spout over fill port.  
Control switch located on panel.



#### *Step two:*

Turn on dust collector fan  
Turn on auger

When needed turn on the  
Vibrator.

\*The vibrator is interlocked with  
the auger and will only  
Run when the auger is on. Plus it's  
on a timer and will cycle on/off





## BAZOOKA TUBE 1200 Operating Manual

### **Loading**

#### *Step One:*

Raise super sack using fork lift or similar machine.



#### *Step Two:*

Position super sack over hopper.



#### *Step three :*

Lower super sack down into hopper onto knife plates, wait approximately 15 seconds, slowly raise super sack..

**\*\*Never reach between the bag and the knife plates or enter hopper.**

**Do not operate Bazooka tube Without protective covers.**



## BAZOOKA TUBE 1200 Operating Manual

### *Step Five:*

The end of loading dust collector clean-out.

1. Leave auger running
2. Open jam gate
3. Turn off dust collector fan.
4. Turn main vibrator on.
5. Run approx. 3-4 minutes
6. Turn dust collector fan ON.
7. Close gate valve.
8. Process complete, shut machine down.

Always clean out auger at the end of the day.

The dust collector air jets will continue to run for a few minutes after shutdown to clean out bags.



## BAZOOKA TUBE 1200 Operating Manual

### Maintenance:

Grease fitting located on red panel  
Below dust collector should be greased  
as noted on panel or  
Every 3 hours of service

Electric motors have a grease fitting  
needs to be greased every 400 hours.

Oil in gear box needs to be changed  
every 2k hours of use. (use Mobil Syn-  
thetic SHC634)

Check all hoses for leaks daily.

Monthly check the dust collector filters.

Never transport the unit with product in  
the hopper.

If unit is not being used cover hopper  
opening to keep out all moisture.

Warning never remove cover or open  
panel without disconnecting power.

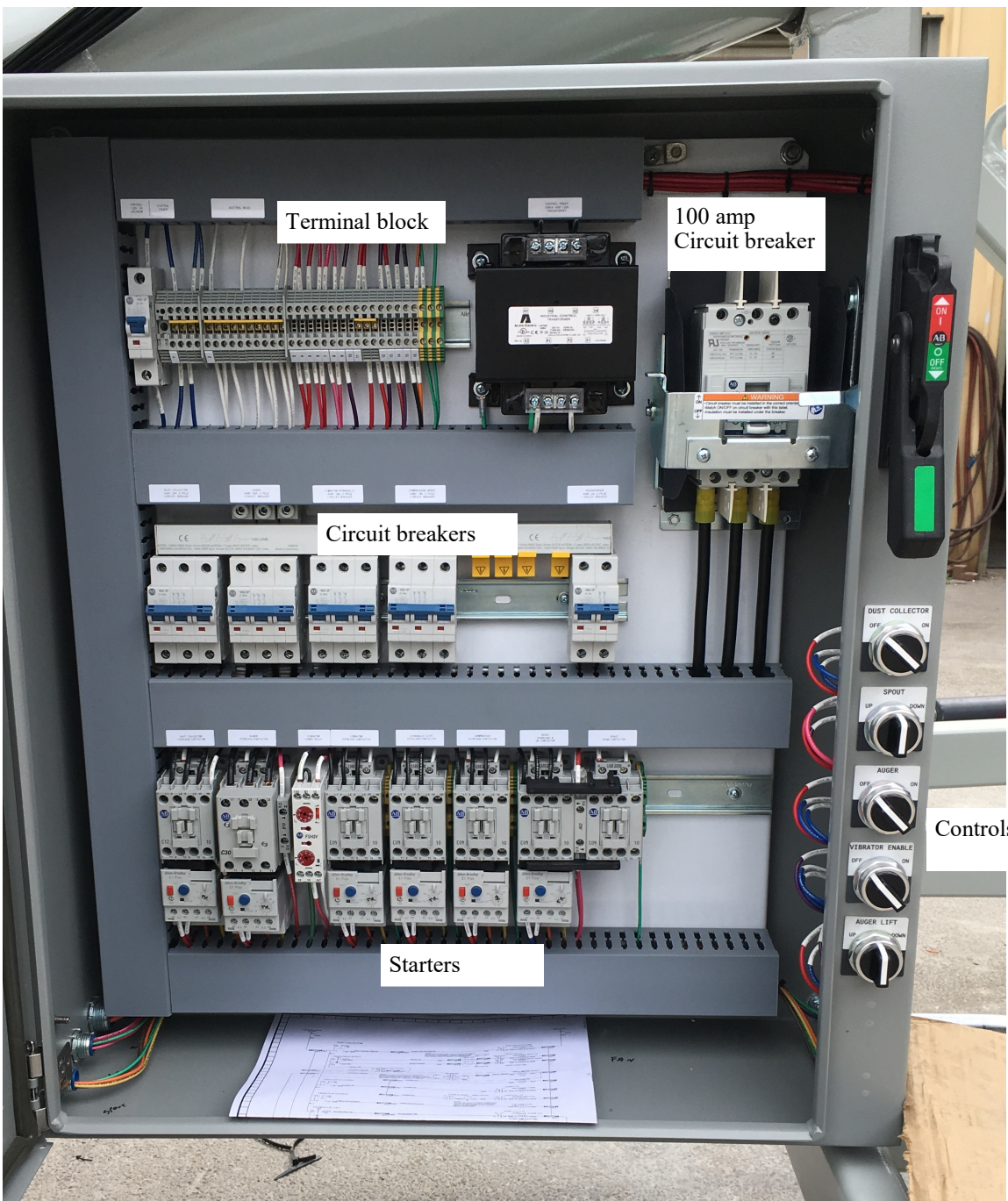




## BAZOOKA TUBE 1200 Operating Manual

### Electrical:

Transformer: located on back of panel



**Parts:**

Parts can be ordered through DSS. (888)745-6797

Bag house parts.

Bags WAM 30" polyester standard cartridge

Part# FL-C-C00-2-PP

Electric Motors:

20 hp 240/480 3phase 256TC TEFC 1700RPM

Part# EL-M-20HP-B-EP

10-1 Dodge Quantis gear reduction

Part# DP-20-9.31-RED

Gear reduction oil Mobil Synthetic SHC634

Bearings:

2 7/16" 4-bolt triple lipped sealed bearings

Part# BG-2.43-FLG

WRAP FLEX 30R 2" Wrap flex coupling

Part# DP-30R-2-HUB

WRAP FLEX 30R 2 1/8" coupling

Part# DP-30R-2.125-HUB

30R Wrap flex element w/ cover bolts

Part# DP-30R-ELMT

30R Cover

Part# DP-30R-COV

2 7/16" DSS Lube Block Seal Kit

Part# DP-2.43-LBSK

2" 4-Bolt triple lipped sealed bearings

Part# BG-2-FLG

Vibrator:

OLI 690 MVE 3ph 480v

Part#VI-690-MVE

8" WAM Slide Gate VLQ 200

Part# VA-8-SQ-SGV

Chains/Sprockets

Size 80 Chain

Part# DC-80

80 BS 18 2

Part# DPS-80-BS-18-2.43

80 BS 24 2

Part# DPS-80-BS-24-2.43

12"x 30' Auger complete

Part# DPA-12-30-B

AM MFG 12 240-4 Loadout Spout

Part# SP-AM-240-4

Hanger Bearings:

2 7/16" 226 Hanger Bearings

Part# AU-216-HB

## Maintenance Updates

### Maintenance:

#### Initial maintenance:

AFTER 2 HOURS OF OPERATION

Remove the upper safety cover, covering the chain drive.

Retighten all the set screws on the bearings and sprockets



**Drive Coupling:** Located between the gearbox and the drive shaft under the Red Cover that has the Bazooka Tube 1200 Sticker.

Inspect the coupling for wear after every 50 hours of service.